

Metal X

The Economical Choice for Metal Rooftops



Lowest Cost per Watt. Fastest Install.

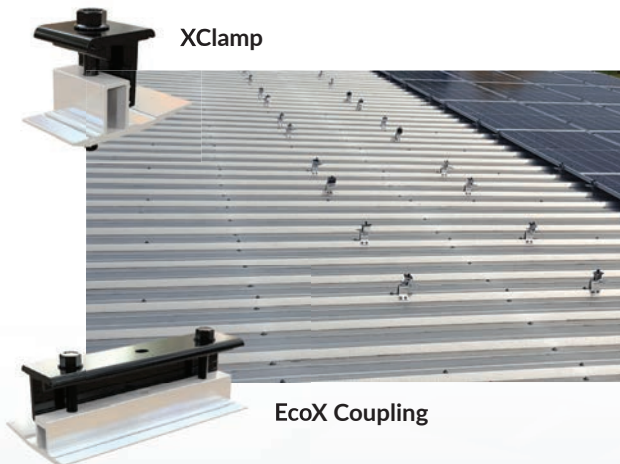
The entire Metal X Racking System consists of small components that are easy to ship, transport, load onto the roof and install. No rails are needed. Components fit every module thickness, so any module can be installed on every metal roof. Installer-focused design delivers fast, simple installation at the lowest cost per watt for industrial, commercial and residential metal rooftops.

Metal X is the best solution for warehouses, agricultural buildings, airplane hangers, commercial buildings and homes where low-cost, low-profile systems are needed.



300kW racking per pallet

No Costly Rails. Maximized Spans. 73% Less Aluminum to Haul and Install.



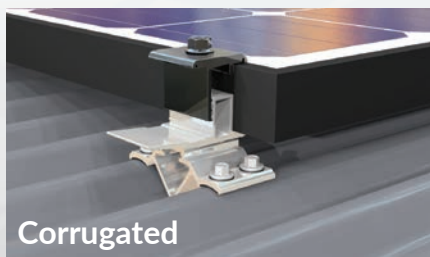
XClamp

EcoX Coupling

Only Metal X

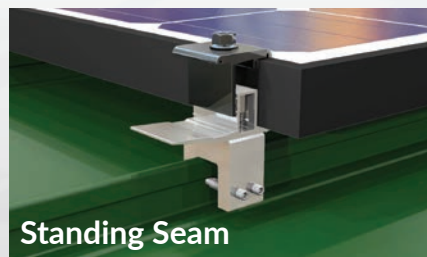
- Enables module drop-in from above for faster, safer installation
- Fits 30 - 46mm module frame thickness
- Simple system consists of XClamps, EcoX Couplings, and Roof Attachments
- Couplings reduce attachments and support maximized spans
- Utilizes EcoX Universal technology, the No. 1 Rail-Less Racking System with more than 500MW installed nationwide

Simple Rail-Less Racking Fits Every Metal Roof.



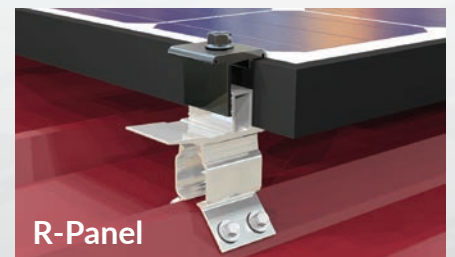
Corrugated

XClamp + S-5! CorruBracket™ 100T



Standing Seam

XClamp + Seam Mount



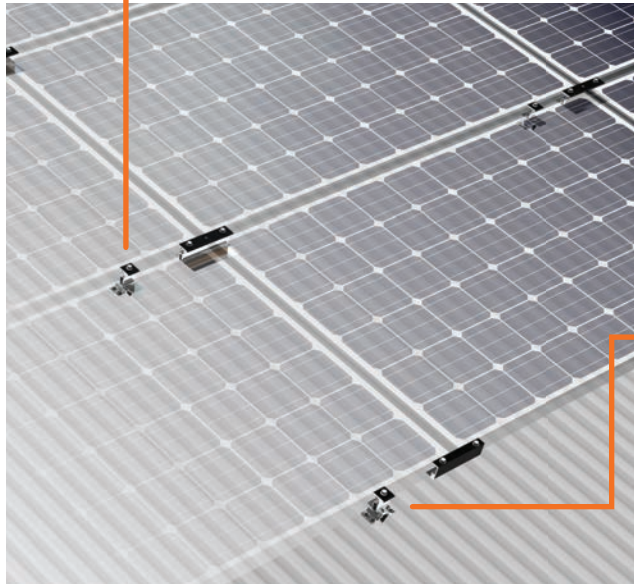
R-Panel

XClamp + S-5! RibBracket I-IV™



Skip the Rails, Cut the Cost

XClamps + EcoX Couplings Enable Rock Bottom Part Count.



XClamps and EcoX Coupling plus roof attachments secure PV modules to metal roofs.

Easily Secure to Any Metal Roof

- XClamp secures modules to roof attachments for corrugated, standing seam or R-panel metal roofs
- Provides integrated bonding, pre-installed Bond Clips



XClamp End

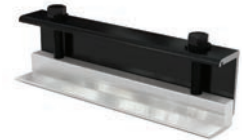


XClamp Mid

Join Modules without Cumbersome Rails



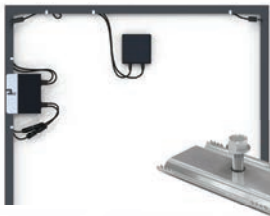
Coupling



End Coupling

- Preassembled Coupling joins modules structurally and electrically, creating continuous structure and integrated bonding
- Eliminates the need for rails

Accessories for Easy Wire Management

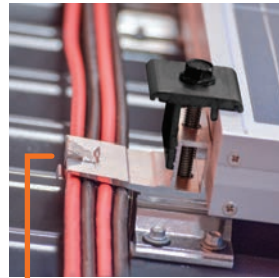


Power Accessory Bracket
Easily attaches and bonds micro-inverters and power optimizers to module frame.



PV Cable Clips
Handy 2 and 4 wire clips press onto module frame or racking components to secure module leads and home runs.

Make Home Runs with Ease



PV Cable Clip

Simply clip wires onto XClamps, Couplings, and module frame as you go.

PV Cable Clips organize and secure array wires in a snap.

Technical Specifications

Materials: Aluminum & Stainless Steel

Validation: UL2703 Certified for grounding/bonding, mechanical load, Fire Class Rating A Type 1 & 2

Warranty: 15 years

Shipping density: 300kW per pallet

Clamping Range: 30 - 46MM

www.ecolibriumsolar.com

Get a Quote & Start Saving

Get a quote and layout for your next metal roof project. We provide complete design services and dedicated project management. To get started, please provide:

1. Metal roof type: Corrugated, Standing Seam or R-Panel
2. Module make and model
3. Basic site details like address and building height

Contact sales@ecolibriumsolar.com or call (740) 249-1877.